

OHTI Visual Web

OHTI Visual Web's feature

- Simplicity register the vast data of marine research.
- Smooth and quick search on WebGIS.
- Operation screen that is easy to understand intuitively.

The screenshot displays the OHTI Visual Web interface within a Windows Internet Explorer browser window. The interface is divided into several functional areas:

- Search Panel (Left):** Contains search criteria such as 'データ種別' (Data Type), 'ファイル名' (File Name), '調査年度' (Survey Year), '調査目的' (Survey Purpose), '調査名' (Survey Name), '船名' (Ship Name), and '範囲' (Range). A search button is located at the bottom of this panel.
- Search Results (Middle-Left):** Lists search results with checkboxes for selection. One result, 'misaki-org1.all', is circled in red.
- File Creation Panel (Bottom-Left):** Includes options for '作成ファイル' (Output File), '範囲' (Range), and '調査年度' (Survey Year).
- Map (Center):** A bathymetric map of the sea floor. A green box highlights navigation controls (directional arrows and zoom in/out buttons) with the text 'Easy handling about show all detail, scaling, move on map'. A blue box on the map points to a specific data track, which is shown in a larger inset window on the right.
- Map Display Panel (Right):** Contains map settings like '海域' (Sea Area), '地図表示' (Map Display), and '検索結果' (Search Results). A yellow box highlights the '検索結果' section, which includes options for '色の設定' (Color Setting) and 'ファイル名を表示する' (Show File Name).
- Map Information (Bottom):** Displays coordinates (経度: 147.6533333, 緯度: 36.6466667) and buttons for '全体表示' (Full Display) and '範囲表示' (Range Display).

Annotations and callouts provide further details:

- A blue box on the left side of the search panel is labeled 'Search from various information or file paths'.
- A red box on the left side of the search results is labeled 'Download to data by one crick'.
- A red box on the left side of the file creation panel is labeled 'Download to data by selected range'.
- An orange arrow points from the '検索結果' panel to the text 'Result of the search view arbitrary color'.
- A blue arrow points from the map inset to the text 'View data range about multibeam data and more'.
- A grey arrow points from the search results list to the text 'Show the pass of result of the search'.

OHTI Visual Web main window on web

Register of the data

Operation of register of the data are drawing up attribute and waters information, registration of data set and registration on web

Drawing up attribute and waters information

- Multibeam data change for water information
- Drawing up attribute information toward various ocean survey data files

Registration of data set

- Water information is saved in folder of data set. If the data is great size, saving folder separate 10 scission, 100 scission and more.
- Registration of the data set can be determined by user selection in various ocean data.

Registration on web

- Export the data from registration of the data set can be copy and sort out to using web folder.
- Drawing up for search information from the data set information

Search of the data

Reserve of search

- Data type · File name · Survey year · Survey intendment · Survey name · Vessel name · Range (selected to sea area, polygon area, lat/long)

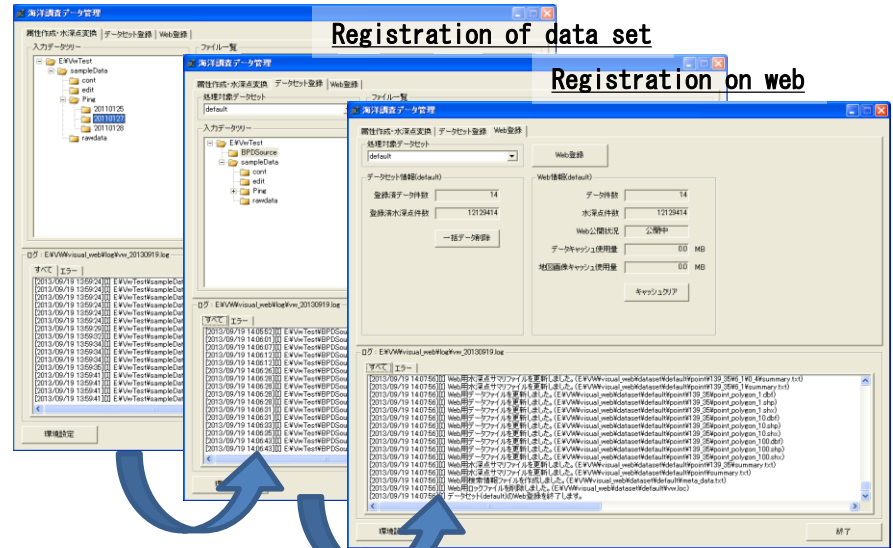
Select and Extract Registered Data

- File, Attribute, Rectangle, Mesh, Soundings

Export of the data

- Download to data by result of the search
- Export of the data used file pass

Drawing up attribute and waters information



Circulation of register of the data

Files	
Multi beam raw data	
Processed multi beam data	
Sidescan sonar data	
Grid file	
Contour file	
Sound pressure file	
Image file	SBP image Sidescan image
Ascii file	Geological file Salinity file Temptrure file Sound velocity file Ocean current file

2 Survey001 [2009]
Survey001_mesh cut 10m.mesh 報告書

データファイルサイズ: 1.64 MB
 経度: 127.818044
 緯度: 26.949739
 海域: 南西諸島
 調査目的: 海底調査
 調査開始年月日: 2009/04/24
 調査終了年月日: 2009/05/25
 調査計画機関: その他
 調査実施機関: 世界測地系
 船舶: 調査船003

[移動](#)

Result of the search of Multibeam data

Result of the search of grid file

Example for result of the search by web