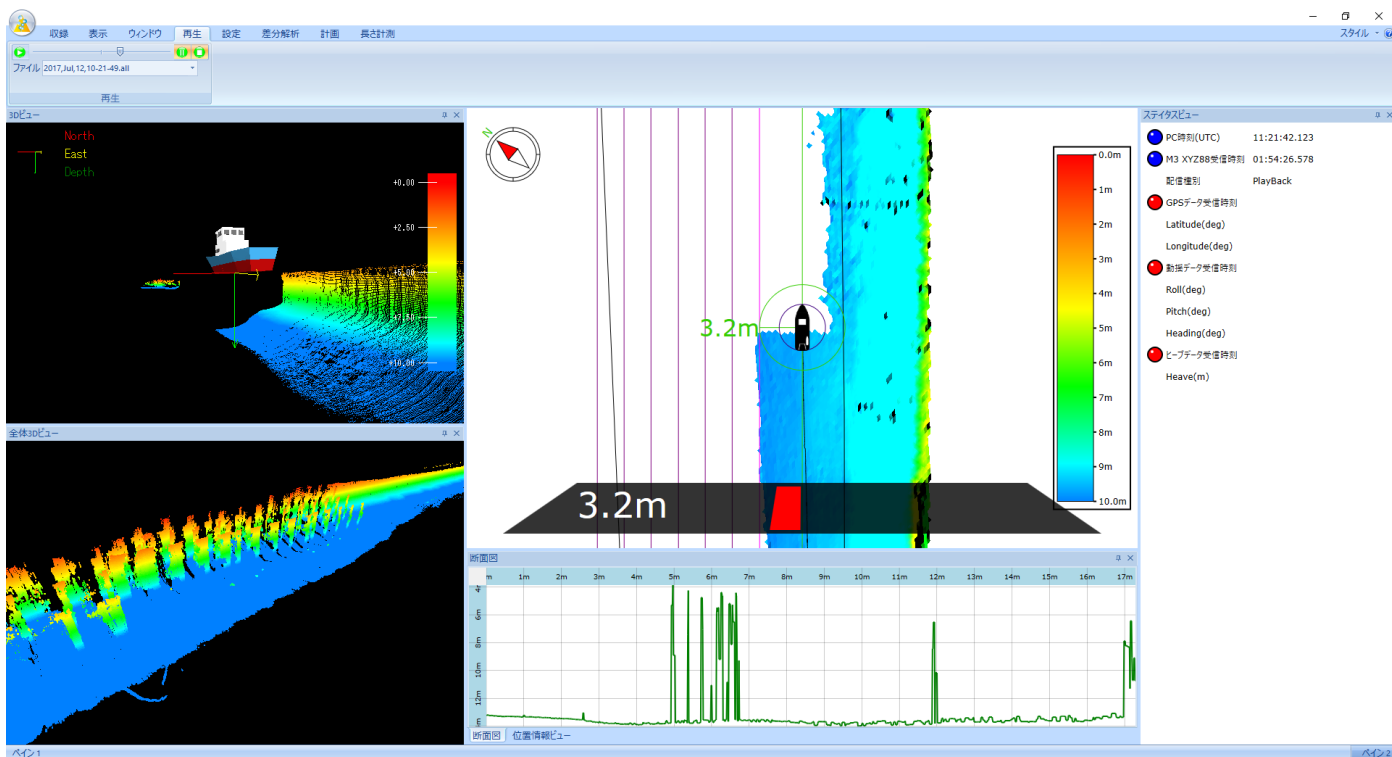


Survey Software Mito Oshie

Mito Oshie is a realtime data mapping software for survey support, which can display in the realtime 2D or 3D mapping data acquired from various equipment such as multi beam sonar or rider and IMU and GNSS sensor. This software also has maneuvering support function such as guide to survey lines.



Main Window

● Plan new survey line

Mito Oshie can automatically draw new survey line by setup to survey area, track interval, number of tracks and others.

● Survey support

Main window display to distance of ship point to planed track.

The displayed data is recorded to a file.(position data, sounding data, acoustic pressure data, water column data)

Support models

Multibeam Sonar

- Edgetech (6205)
- Hydrosweep (third generation)
- Kongsberg (EM Series, M3)
- Norbit
- PingDSP
- R2Sonic
- Seabat (MB and T Series)

Laser Scanner

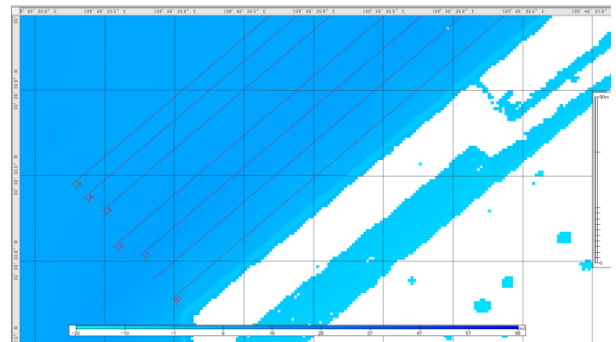
- Riegl (VZ1000)
- Velodyne (VLP-16)

IMU and GNSS

- POS-MV
- other (NMEA)

Display sounding information

- Planed line, Track, Shaded relief image
- Swath image
- Three-dimensional image
- Cross-section image



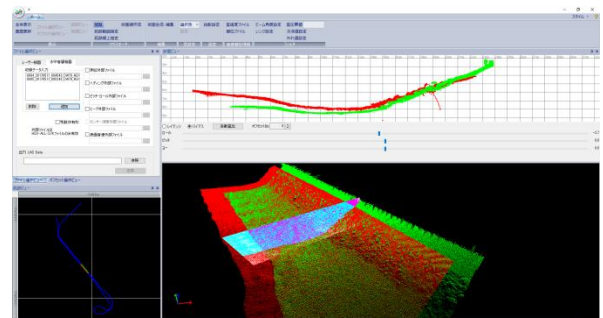
Drawing new plan track

Function

- Display distance from ship point to planed line
- Status window displays connecting condition of devises
- Recording of data files
- Playback of underwater acoustic image
- Auto tracking on display window
- Filter to display(depth filter, range filter and more)
- Differential analysis between actual measurement value and design
- Drawing new planed line
- Patch test

Operating

- CPU : Core i7-6700K(4.0GHz)
- MEM : 32GB
- SSD : 1TB
- OS : Windows7 SP1 or later, Windows10
- GPU : NVIDIA Quadro M3000M(4GB)



Patch test

Option features

- Display to ENC (electron chart)



Cross-section image