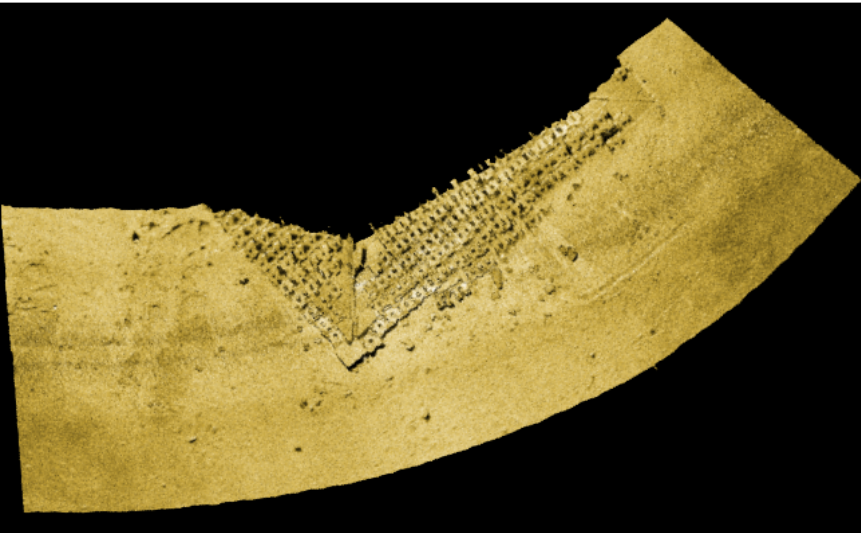


Sidescan Sonar Data Processing Software

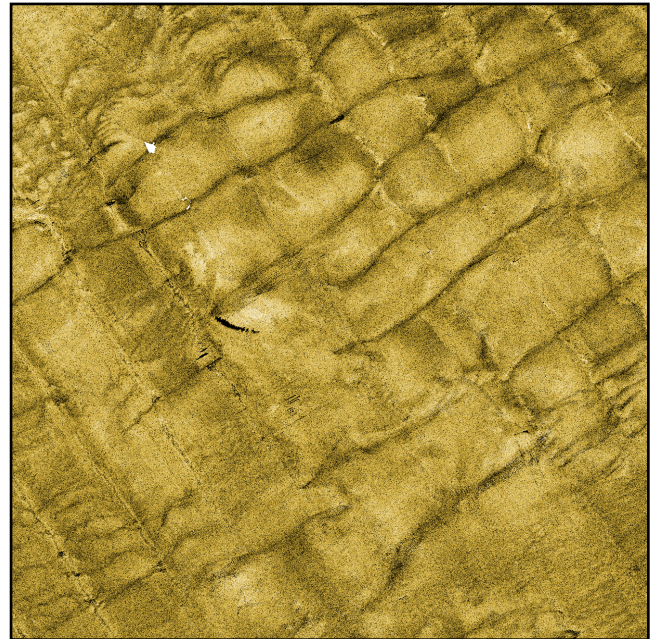


Lampyr i dEye8

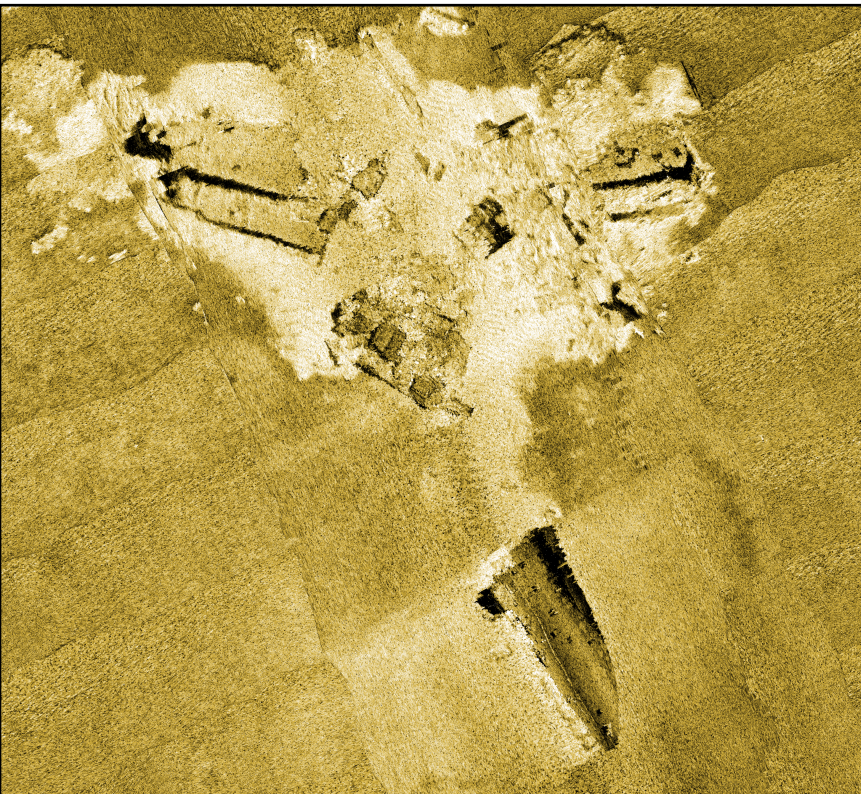
This software is making a mosaic image from acoustic information acquired by the side-scan sonar.



Structure



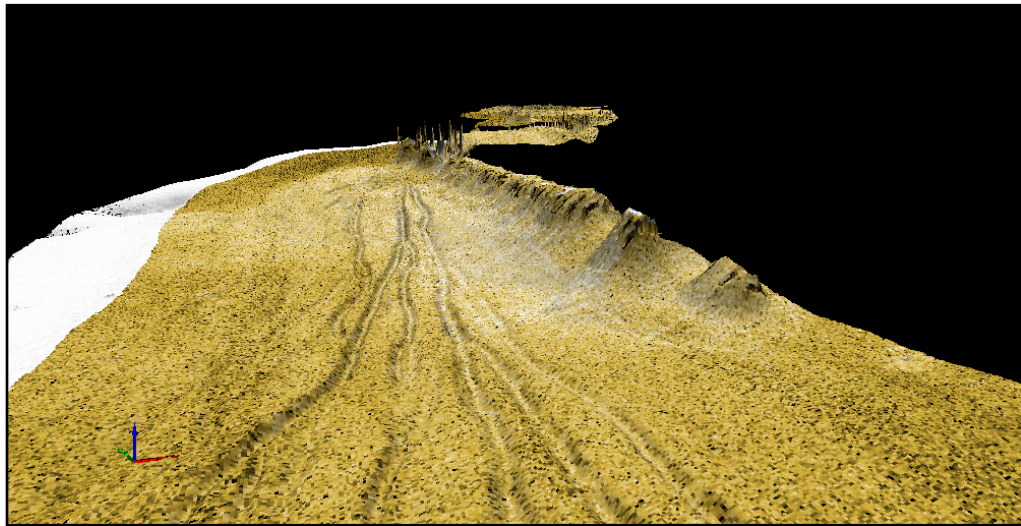
Sand Wave



Sunken Ship

- ◆ Supports various side scan data formats
- ◆ Visible track editor
- ◆ Various correction functions for physical data
- ◆ Handy tools to make mosaic images
- ◆ Displays and outputs high-resolution SSS (Side Scan Sonar) images

Lampyr i dEye8



3D mosaic image overlapped on the seafloor topography data by Visual3DX-6^{*3}

Optimization of graphical user interface

The optimized user interfaces such as a ribbon bar and a file view improve operational efficiency.

Import Format

New KMALL, XTF, XSE, all, mb41, asd, acf, hsx, JSF, S7K, 81s, 872, sdf^{*1}

Reading of external files

It reads the position information, motion information, and sensor water depth information from an external file, and corrected.

Information sharing

- Project files sharing with MarineDiscovery7^{*2}
- SSS images are easy to import into Visual3DX-6^{*3} and other GIS software

Track Correction

- Display of track information (ship and tow fish)
- Manual or Auto editing of track (linear interpolation, spline interpolation)

Quality Control

- Browsing of data for each ping (e.g. date and time, location, 3-axis information, altitude, water depth, gain, pixel size, etc.)
- Graph displays of sensor information
- Various correction for each file (e.g. level, radiometric, magnetic deviation, bathymetric distortion, etc.)
- Batch Calculation of under water depth for each ping from image

New • New function for cleaning noise (angle filter, add flags for noise)

Display Settings

- Three kinds of map projection (Mercator, TM and UTM) corresponding to the rotating coordinate by any origin
- Scale Settings (1/1000, 1/2500, 1/5000, 1/10000, 1/25000, 1/50000, 1/100000, 1/200000, 1/500000, 1/1000000)
- Display in high resolution commensurate with enormous side scan data (150, 180, 300, 600, 1200 dip, up to a maximum resolution of the input data)
- Selectable Color display (the mosaic image color can be displayed)

SSS Image View

- Geometric correction by using motion or track data
- Method of display image is selectable (e.g. raw, interpolation, averaging)
- Easy to generate mosaic images (image display order is selectable e.g. port, starboard, and time axis respectively)
- Import of contour images (Overlapping of contour images created by MarineDiscovery on mosaic images is available)
- Distance measure on mosaic images.
- Importing color palettes files (clr of ESRI and cpt).

New

Export File

- Bitmap, GeoTiff, PostScript
- GeoTiff of digital number (32bit float)
- CSV files of latitude, longitude, amplitude.

New

Operating environment

PC	OS	Windows7 SP1, or later
	CPU	Intel Core i7 2600K, or more
	Memory	8 GB, or more
	Hard Disk	50 GB, or more (500 GB, or more recommended)
	Graphics board	GeForce GT610 or Radeon HD6450, or more
	Peripherals	CD-ROM, Keyboard, mouse
Screen	Resolution	1280×1024, or higher
	number of colors	True Color 32 bits, or more

*1. Please inquire about other formats and models.

*2. MarineDiscovery7 is our product, multibeam data processing software.

*3. Visual3DX-6 is our product, 3D visualization software.

